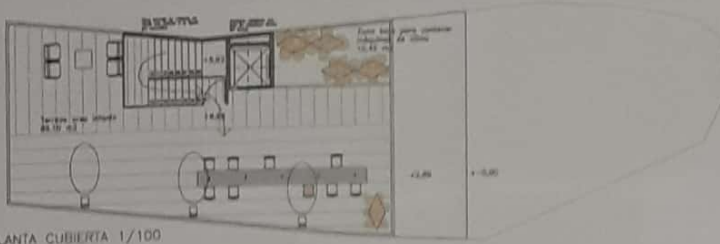
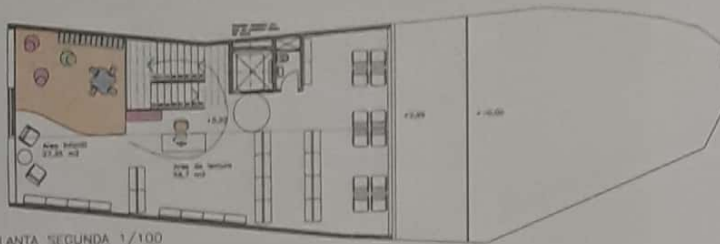


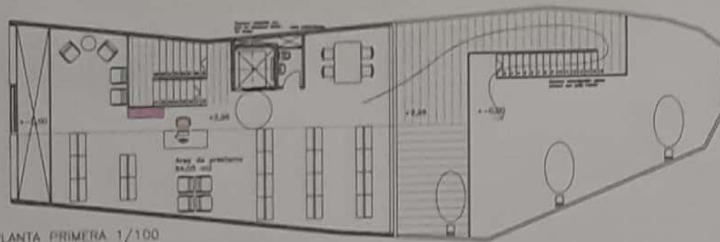
PLANTA CUBIERTA 2 1/100



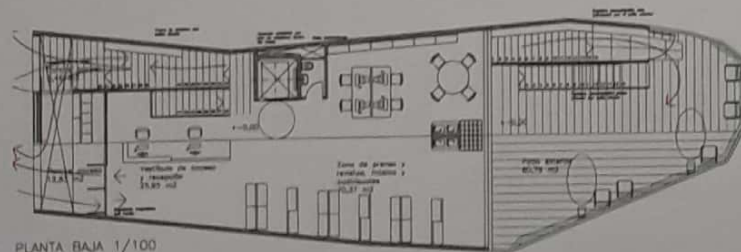
PLANTA CUBIERTA 1 1/100



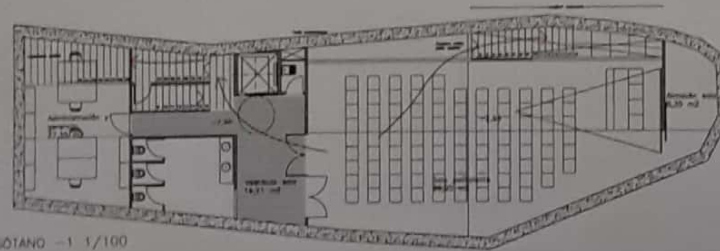
PLANTA SEGUNDA 1/100



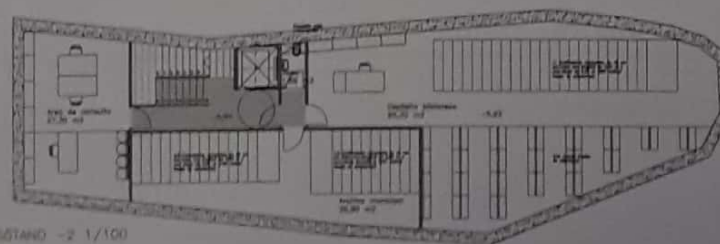
PLANTA PRIMERA 1/100



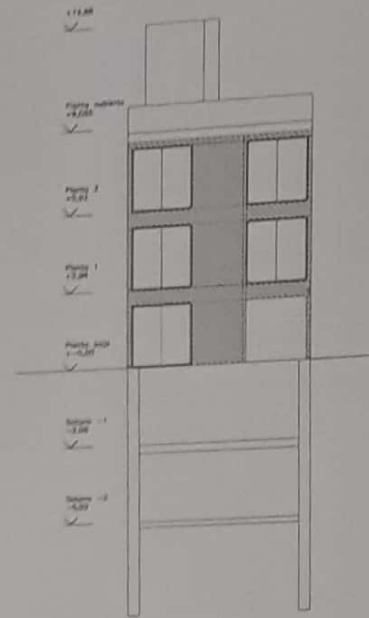
PLANTA BAJA 1/100



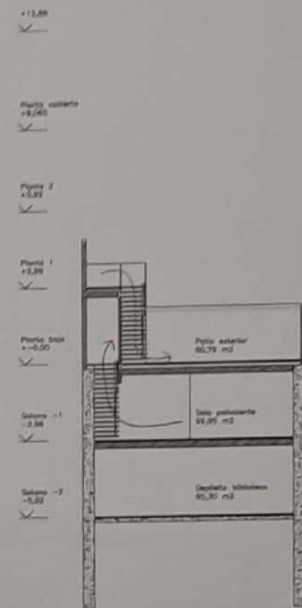
SOTANO -1 1/100



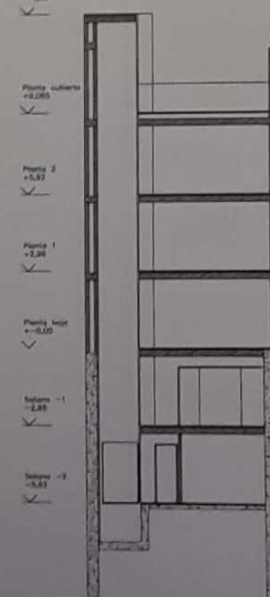
SOTANO -2 1/100



ALZADO NORTE 1/100



SECCIÓN 1 1/100



SECCIÓN 2 1/100



"CONCURSO DE PROYECTOS PARA CONSTRUCCIÓN DE EDIFICIO DESTINADO A BIBLIOTECA MUNICIPAL EN CALLE IGLESIA N.º 1 DE NERJA"

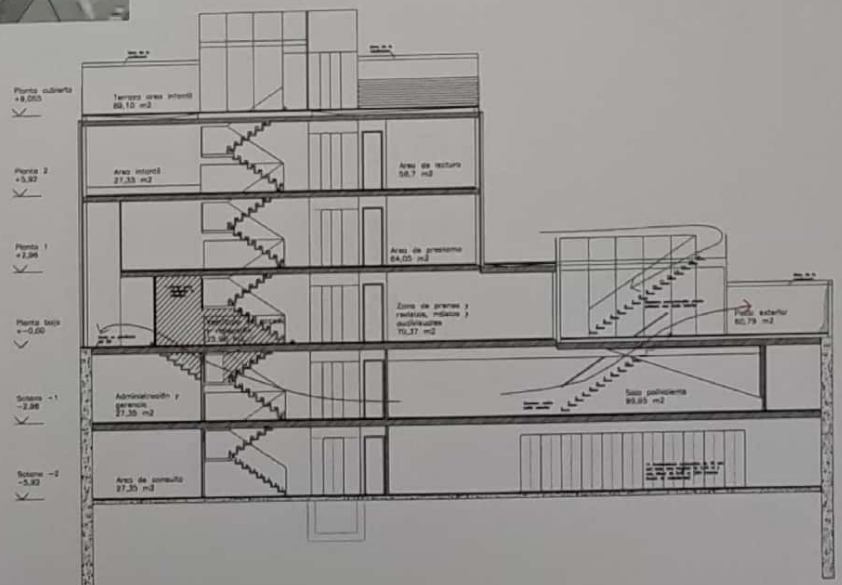




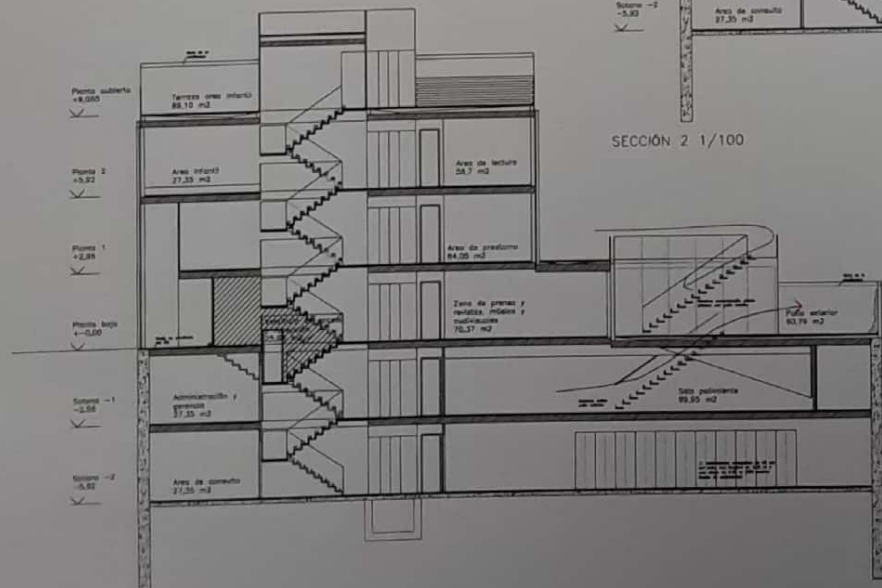
PLANI SITUACIÓN 1/1000



PLANI EMPLAZAMIENTO 1/300



SECCIÓN 2 1/100



SECCIÓN 2 1/100

"CONCURSO DE PROYECTOS PARA CONSTRUCCIÓN DE EDIFICIO DESTINADO A BIBLIOTECA MUNICIPAL EN CALLE IGLESIA N.º 1 DE NERJA"

